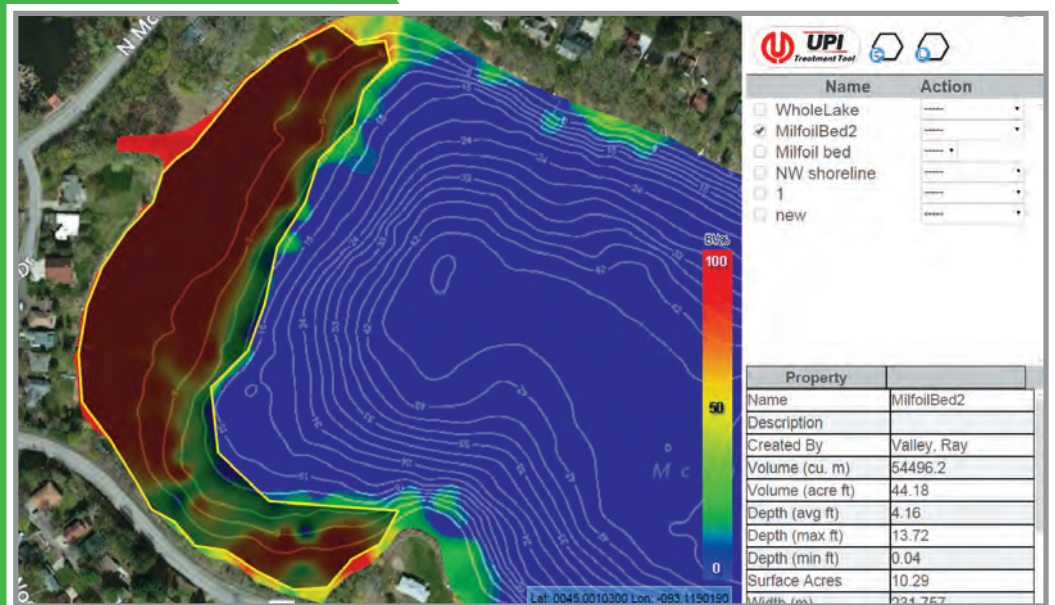


Step up to the most advanced mapping technology available!

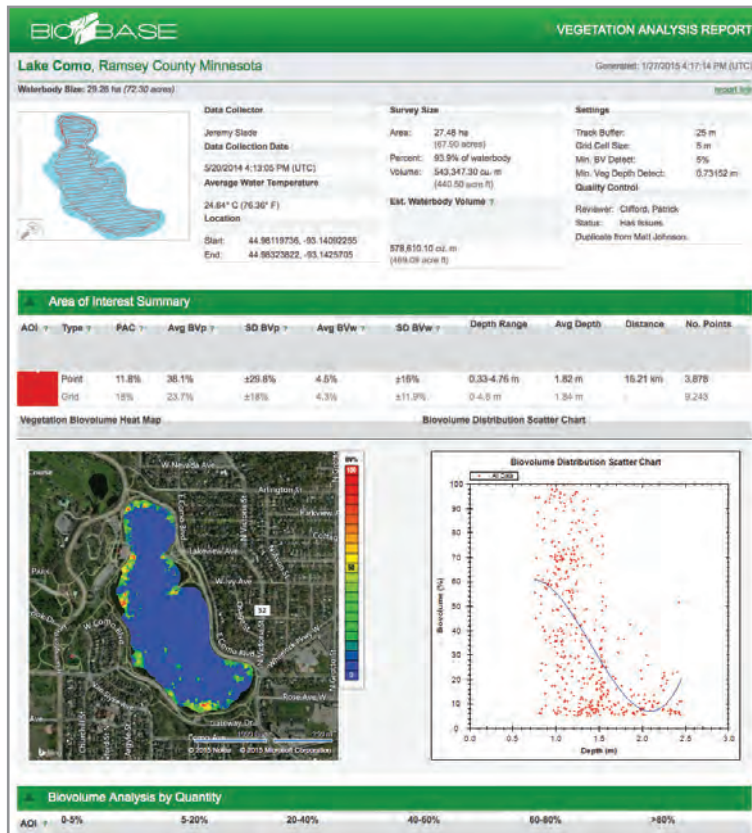
**Professional—
Accurate—
Efficient—**



- Subscriptions for BioBase can be Tailored to Fit Any Applicator Needs
- Hardware is Affordable
- Provides Accurate Bathymetric Data for Herbicide and Algicide Applications
- Survey Maps are Available in a Timely Fashion



BioBase Provides Complete Reports—



- Required for State Regulatory Agencies and NPDES
- Hardware and Subscriptions are available thru UPI *Elite Awards*, www.upiawards.com



BioBase Provides Exact UPI Product Needs—

UPI Treatment Tool

Notes: If a polygon is listed on a previous page and doesn't appear on this list, you must select apply and calculate prior to creating a treatment. Overlapping polygons may cause an overapplication of product that may cause adverse results.

Treatment Area: Entire Lake test 1 1 2 3 UPI Demo

Product:

Primary Target Species:

Additional Species Targets: Bur Reed Coontail Horned Pondweed Sago Pondweed Hydrilla Hygrophilla Milfoil Naiad American Pondweed Largeleaf Pondweed (Bass Weed) Curlyleaf Pondweed Flatstem Pondweed

Rate: Rate must be between 0.75 and 1.5

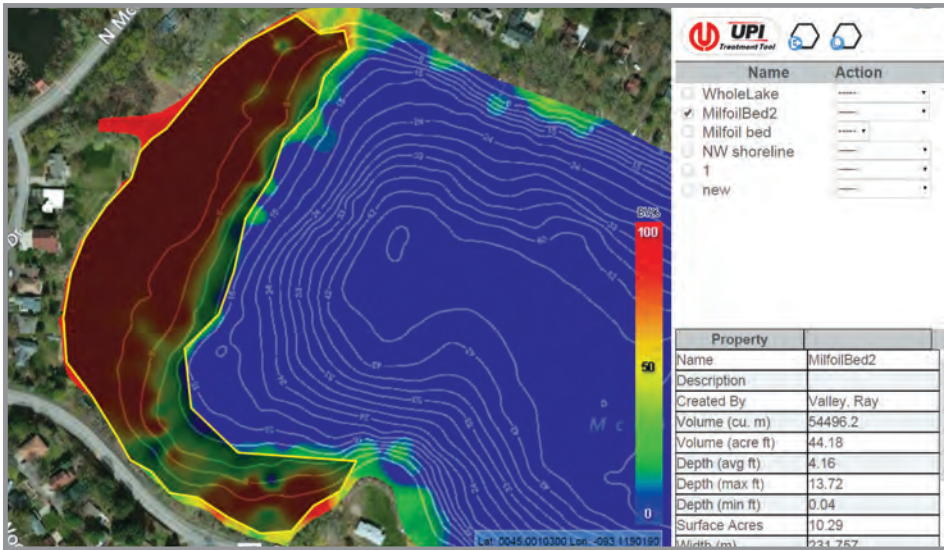
Target Area	Product	Entered Rate	Quantity Needed	Surface Acres	Water Volume acre ft
Lake Como	Aquathol K	0.75	226.22 Gallons	72.31	469.09

Save Display Treatment History Cancel

For more info contact us:
info.biobase@navico.com
www.cibiobase.com
 651.204.0640

www.upi-usa.com
 800.438.6071
 or contact your local
 UPI Representative

Precision Aquatic Plant Management starts with BioBase and the UPI Treatment Tool!



BioBase maps and the UPI Treatment Tool can make aquatic vegetation treatments less expensive and more effective.



ELITE AWARDS Hardware and Subscriptions are available thru UPI Elite Awards, www.upiawards.com.

- **Underestimating boundary delineations or depths of treatment areas** causes lower than recommended treatment doses and potentially, poor vegetation control.
- **Overestimating boundary delineations or depths of treatment areas** causes higher than recommended treatment doses, higher herbicide costs, and potentially harmful non-target impacts.
 - **Incorrectly estimating an infested area’s lateral size by as few as two acres** — even when your depth estimate is accurate — could cause you to incorrectly estimate product needs by 25 gallons and \$1,750.
 - **Incorrectly estimating an infested area’s average depth by as little as 1½ feet** — even if your acreage estimation is accurate — could cause you to incorrectly estimate product needs by 22 gallons and \$1,500.
 - **Incorrectly estimating an infested area’s lateral size by two acres and its depth by 1½ feet** could cause you to incorrectly estimate product need by 58 gallons and costs of almost \$4,000.
- **Experience accurate cost and product calculations, best control, and minimal non-target impacts** by precisely mapping depth and aquatic plant abundance.
- **You control where and how much data is collected**, BioBase automatically creates objective maps of aquatic plant abundance and depth.

For more info contact us:

info.biobase@navico.com
www.cibiobase.com
 651.204.0640

www.upi-usa.com
 800.438.6071
 or contact your local UPI Representative